


## 2. MOUSE EMBRYONIC STEM CELL (mESC) KARYOTYPING ANALYSIS

### REPORT WITH SUMMARY OF CYTOGENETIC ANALYSIS



**CYTOGENOMIC SERVICES RESEARCH REPORT**  
 The Centre for Applied Genomics  
 The Hospital for Sick Children  
 14-604 MaRS East Tower  
 101 College Street, Toronto ON M5G 1L7

Sample ID: SAMPLE\_NAME\_DATE

**MOUSE ES CELL LINE G-BAND KARYOTYPING**  
 SAMPLE ID: Sample\_name

REPORT SERIAL NUMBER: \_\_\_\_\_ LIMS SAMPLE ID: \_\_\_\_\_  
 DATE: \_\_\_\_\_ Technician: \_\_\_\_\_  
 PROJECT: \_\_\_\_\_  
 USER/PI: \_\_\_\_\_

Sample Number: \_\_\_\_\_  
 Sample Type: \_\_\_\_\_  
 Date Received: \_\_\_\_\_  
 Number of Plates Received: \_\_\_\_\_

**Harvest Particulars:**  
 Date Harvested: \_\_\_\_\_  
 Colcemid concentration: \_\_\_\_\_  
 Colcemid exposure time: \_\_\_\_\_  
 Hypotonic KCl exposure time: \_\_\_\_\_

**G-band Staining Particulars:**  
 Slide Aging: \_\_\_\_\_  
 Concentration of Pancreatin: \_\_\_\_\_  
 Time in Pancreatin: \_\_\_\_\_

**G-band Karyotyping Analysis Summary:**

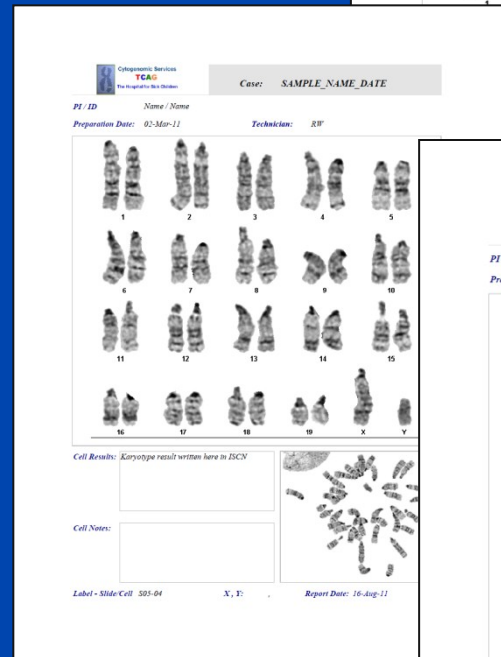
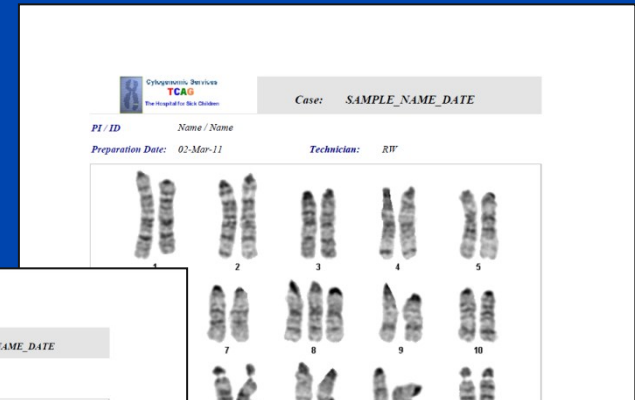
Number of cells counted	Chromosome modal number	Number of cells karyotyped	Number of atypical cells	Number of atypical clonal cells
5				

**Details of Above Karyotype Analysis:**

Number of cells	Chromosome count	Karyotype	Comments

\*Clonal abnormalities are highlighted.  
**Banding resolution:** \_\_\_\_\_  
**KARYOTYPE:** \_\_\_\_\_  
**Comment:** \_\_\_\_\_

**Representative images attached:**  
 1) \_\_\_\_\_  
 2) \_\_\_\_\_  
 3) \_\_\_\_\_



### AND REPRESENTATIVE IMAGES

